



2 Shirland Road, London, W9 2JR
£575,000 Leasehold





3 x  1 x  1 x 

An exceptional opportunity to acquire this spacious three double-bedroom, split-level maisonette, ideally positioned just moments from the picturesque Little Venice (Grand Union Canal) and a short walk to Warwick Avenue Underground Station (Bakerloo Line).

Set within Charfield Court at the junction of Formosa Street and Shirland Road, the property is superbly located for the vibrant amenities of Maida Vale and Little Venice, including the charming cafés and shops of Formosa Street.

This well-proportioned property features three generously sized bedrooms, a bright and airy living room, a well-appointed kitchen with dining room area that opens onto a private terrace, a modern family bathroom and a separate W/C. The building also contains a lift.

Offered with a long lease and no onward chain, this property represents an outstanding opportunity for first-time buyers and investors alike.

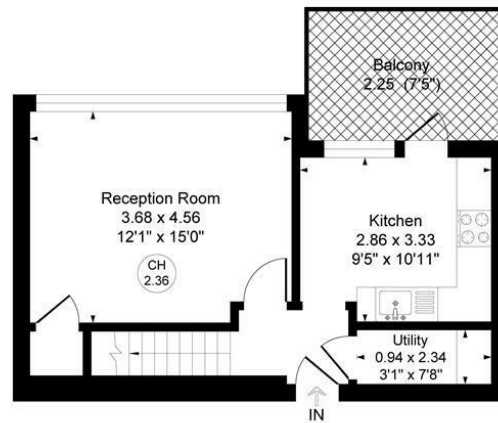


Charfield Court, 2 Shirland Road, London, W9

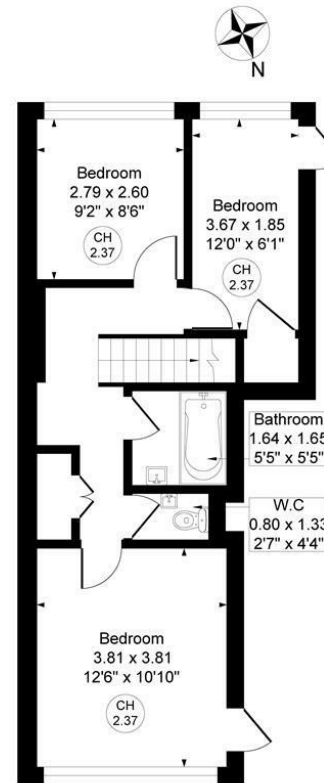
Approximate Gross Internal Floor Area = 78.1 sq m / 841 sq ft

Fifth Floor Area = 35.4 sq m / 381 sq ft

Sixth Floor Area = 42.7 sq m / 460 sq ft



Fifth Floor



Sixth Floor

Illustration for identification purposes only, measurements are approximate, not to scale.

Important Notice Debussy Property Service Ltd trading as Braithwait for themselves and for the vendor of this property whose agents they are, give notice that (i) these particulars do not constitute any part of an offer or contract, (ii) all statements contained within these particulars are made without responsibility on the part of Braithwait or the vendor, (iii) whilst none in good faith, none of the statements contained within these particulars are to be relied upon as a statement of representation or fact, (iv) any intending purchaser must satisfy him/herself by inspection or otherwise as to the correctness of each of the statements contained within these particulars, (v) the vendor does not make or give either Braithwait or any person within their employment any authority to make or give any representation or warranty whatsoever in relation to this property. Wide angled lenses may be used in photographs.

Call us on 0207 289 8889 or email sales@braithwait.co.uk

